



Operating Instruction SR 530 Hood

General information

The SR 530 together with fan unit SR 500/SR 500 EX/SR 700 and approved filters are included in the Sundström fan-assisted respiratory protective device system conforming to EN 12941/EN 12942:1998 class TH3.

Combination of SR 530-SR 500 EX is specially designed for using in potentially explosive and fire hazardous environments.
See user instructions or label on fan unit for classification.

SR 530 together with compressed air attachment SR 507 and breathing hose SR 358/SR 359/SR 360 are included in the Sundström compressed air-fed respiratory device system conforming to EN 14594:2005 class 3A/3B.

This combination gets a respiratory with continuous flow to a compressed air fed respiratory device

SR 530 is in one size.

When selecting equipment for SR 530 some of the factors that should be taken into account are as follows:

- Type of pollutant
- Concentrations
- Work intensity
- Protection requirements in addition to respiratory protective advice.

Risk analysis should be carried by a person who has suitable training and experience in the area.

Limitations

When working in explosive environments all parts of the equipment have to be EX-approved. When changing spare parts and accessories you must check that these are EX approved for work in potentially explosive environments.

Instructions for use for SR 530 should be read before use.

2.1 Unpacking SR 530

2.2 Packing list



Check that the equipment is complete in accordance with the packing list and has not been damaged in transport.

Packing list:

- Hood with breathing hose.
- User instructions
- Cleaning tissue

2.3 Assembly



Remove the protective film from the visor.



Check that the O-ring of the hose is in place.



Connect the hose to the fan unit and turn it clockwise about 1/ 8 of a turn.

Flow control



Place the head top in the flow meter and start the fan unit.

Grip the lower part of the bag to seal around the breathing hose.

Grip the flow meter tube with the other hand so that the tube points vertically upwards from the bag.

Read the position of the ball in the tube. This should hover at a level with or slightly above the upper marking on the tube.

If minimum flow is not achieved, check that:

- The flow meter is held upright.
- The ball moves freely.
- The bag seals well around the hose.

2.4 Putting the hood on



Connect the hose, put the fan unit on and start it. See the user instructions for the SR 500.

Adjust the head harness by adjusting the length of the Velcro strap. This is important for ensuring a good fit.



Hold the hood upside down. Grip each side of the hood opening with one hand.



Pull the hood down so that the head harness fits firmly and comfortably around your head.



Adjust the neck size of the hood by means of the elastic neck strap.



A bendable metal rail is fitted around the lower edge of the visor. The distance between your face and the visor can be adjusted by bending the rail by hand.



Make sure that the breathing hose runs along your back and is not twisted.

4.1 Cleaning



Sundström cleaning tissues SR 5226 that clean and disinfect are recommended for daily care.



If the equipment is more heavily fouled, use a soft brush or sponge moistened with a solution of water and dishwashing detergent or the like. Rinse the equipment and leave it to dry.



Snap off the valve cover from the valve seat.



Slip of the membrane



Clean the valve seat and check that the valve seat is ok.



Clean the exhalation membrane



Clean the valve cover on the inside and outside.

4.2 Storage

After cleaning, store the equipment in a dry and clean place at room temperature. Avoid exposing it to direct sunlight. The flow meter can be turned inside out and can be used as storage bag for the head top.

4.3 Maintenance schedule

	Before use	After use	Annually
Visual inspection	•	•	•
Performance check	•		•
Cleaning		•	•
Change of O-ring for breathing hose			•
Change of gasket for breathing hose (SR 540 EX)			•
Change of exhalation membrane			•

The schedule represents the minimum requirements for maintenance routines in order to ensure that equipment will always be in functional condition.

4.4.1 To change the exhalation membrane



Snap off the valve cover. The cover must be changed at the same time as the membrane. Proceed as follows.



Slip off the membrane.



Press the new membrane onto the pin. Carefully check that the membrane is in contact with the valve seat all way round.



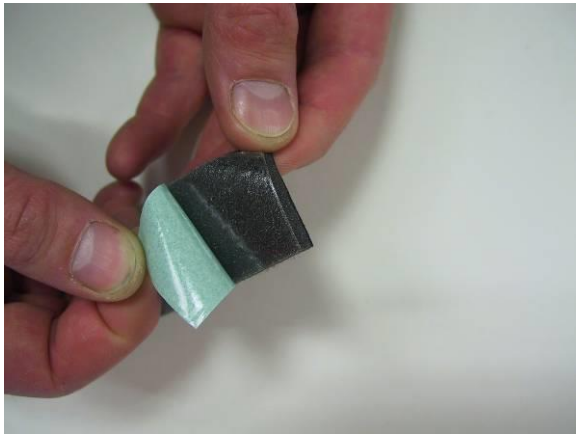
Press the valve cover into place. A clicking sound indicates that it is in place.

4.4.4 To change the sweatband



Pick away one end of the sweatband so that it is removed together with the tape

Pull sweatband off.



Remove the protective paper.



Fit the new sweatband.

The forehead strap and the sweatband should be mounted edge to edge.

Mounting peel-off SR 522



Remove the protective film on the four self adhesive dots.



Begin to attach one of the two dots in the upper corner of the visor.



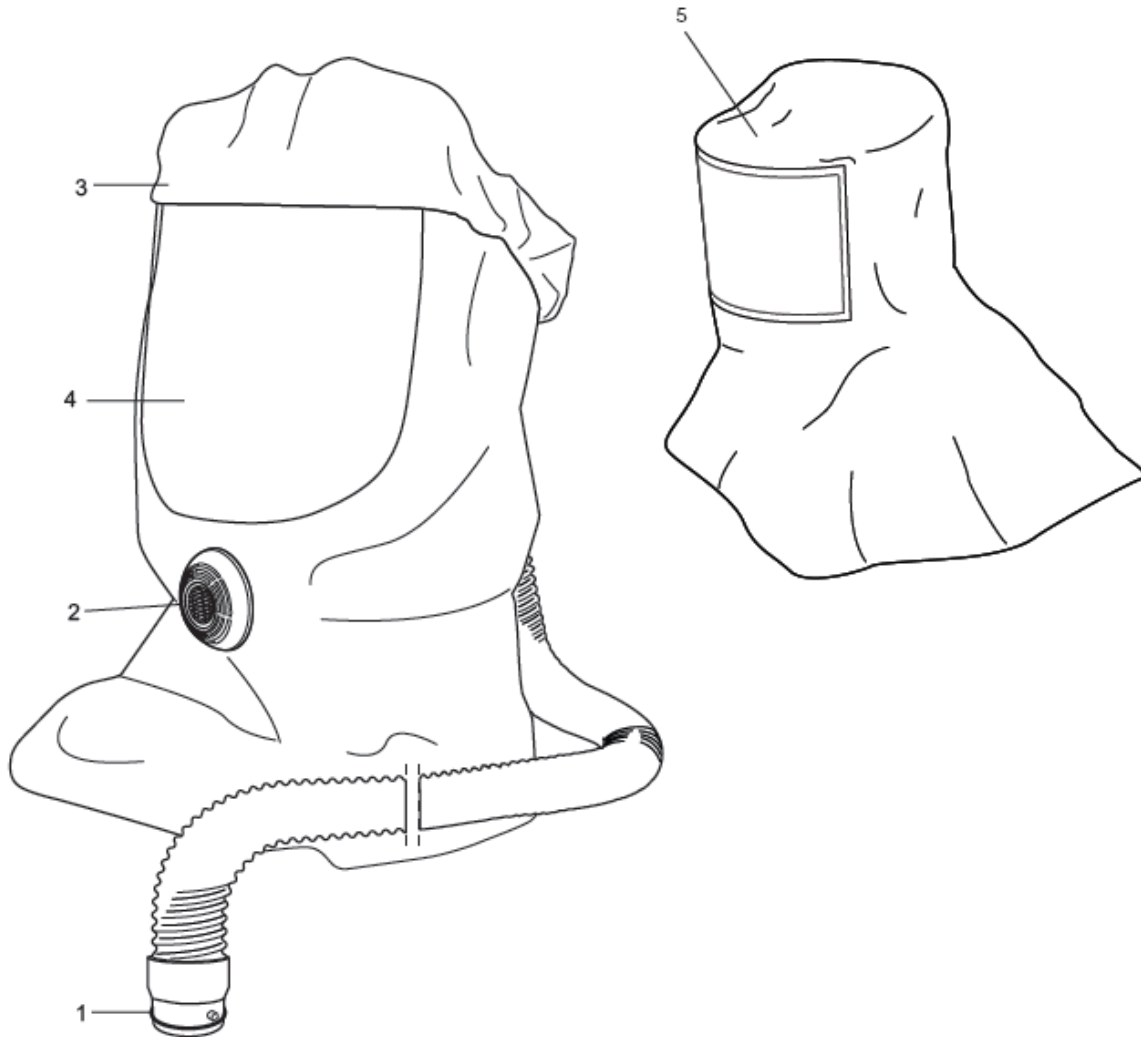
Attach the other one in opposite upper corner, then the two dots in lower corner.

Recommend to not attaching more than 3 peel-offs at each other.

SR 530 Hood TH3

Spare parts / Accessories

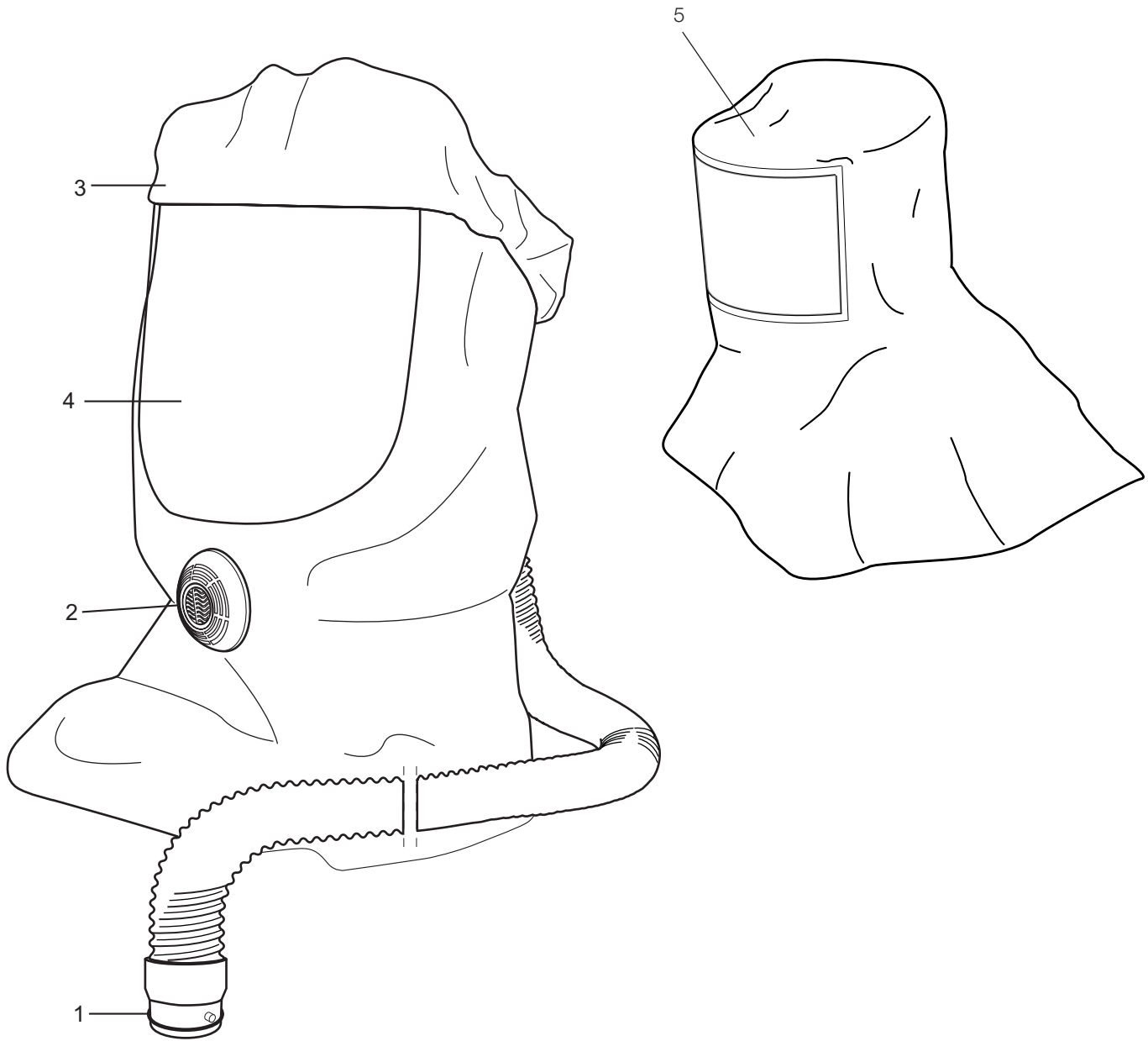
EN



No.	Description	Ordering No.
1.	O-ring for breathing hose	R06-0202
2.	Set of valves for SR 520/SR 530	R06-0201
3.	Sweatband, SR 520/SR 530	R06-0203
4.	Peel-off set PETG, SR 520/SR530	T06-0201
5.	Tyvek Hood, SR 520/SR 530/SR 580	T06-0806
	Cleaning tissues SR 5226, box of 50	H09-0401

SR 530 Hood TH3

Spare parts / Accessories



No.	Description	Ordering No.
1.	O-ring for breathing hose	R06-0202
2.	Set of valves for SR 520/SR 530	R06-0201
3.	Sweatband, SR 520/SR 530	R06-0203
4.	Peel-off set PETG, SR 520/SR530	T06-0201
5.	Tyvek Hood, SR 520/SR 530/SR 580	T06-0806
	Cleaning tissues SR 5226, box of 50	H09-0401