

## CleanAIR<sup>®</sup> UniMask



ENG 3  
CZE 4

DAN 6  
FIN 7

FRE 9  
GER 10

**Important**

For your own safety please read and remember the following instructions before use. If you have any questions, please contact the manufacturer or your distributor. Keep the manual for future reference.

**1. Introduction**

CleanAIR® UniMask is adapted for use with powered air purifying respirators (hereinafter PAPR) CleanAIR® or with continuous flow compressed air line breathing apparatuses (hereinafter "compressed air systems CleanAIR®) and thus provides protection of the respiratory tract.

The overpressure created in the headtop prevents contaminants from entering the breathing zone. This ensures the wearer's comfort, even with long-term use. Breathing remains easy because the user does not have to overcome the resistance of the filter.

UniMask provides respiratory protection and face protection against particles with high speed and high energy impact.

If not sure about the suitability of the hood for a specific application, consult with the manufacturer or your supplier!

**2. Limitations on use**

- Never use the hood in the following environments and under the following conditions:
  - If oxygen concentration in the environment is lower than 17 %.
  - In oxygen-enriched environments.
  - In environments where the user lacks knowledge about the type of dangerous substances and their concentration.
  - In environments that represent an immediate danger to life and health.
- If the protection foil is damaged, replace it immediately.
- The hood does not protect against hard shocks, explosions or corrosive substances.
- Move to a secure location and take appropriate measures when any of the following problems occur while using the hood:
  - If you feel a significant increase in breathing resistance or any other problems with breathing.
  - If you experience stench, irritation or an unpleasant taste while breathing.
  - If you feel unwell or experience nausea.
- Use certified original filters designed for your powered air purifying respirator only. Replace filters every time you detect the change of odour in supplied air from the respirator.
- Filters designed for capturing solid and liquid particles (particle filters) do not protect the user against any gases. Filters designed for capturing gases do not protect the user against any particles. In the workplace contaminated with both particles and gases, combined filters must be used.
- The material of the hood can cause allergic reactions to sensitive persons.
- Pay attention to check the product before use. Do not use, if any part of the system is damaged.
- Don't put the hood on a hot surface.
- This product is intended for use in environments with a temperature range of 0 °C to + 60 °C with relative humidity of 20 - 95 % Rh.

**3. Control and spare parts replacement****Adjusting the airflow direction**

By sliding the slider control knobs on the bottom front of the mask you can adjust the airflow in three ways (airflow on the visor from the top, on the visor from the bottom and airflow toward the mouth). By closing both knobs all the airflow will enter from the top. By opening both knobs the airflow will be evenly divided between all openings when entering the mask.

**Changing the exhalation valve membrane**

Remove the plastic cover followed by the old membrane. Put the new membrane on the plastic pin in the original place. Put the plastic cover back.

**Replacing the visor**

Shift the visor locks on both sides up (open) and remove the visor. Place the new visor on the same spot and shift both locks on the sides back down (lock). Make sure the visor fits properly.

**Removing the face seal**

First remove the visor, then remove the face seal by pushing it out of the mask using your thumbs. The easiest way is to start on the side, just above the visor locks.

**Attaching the new face seal**

Start by placing the face seal grooves into the grooves of the shield on the left side, make sure the triangular indicators on both parts match. Hold the parts in the right position with one hand while pushing the parts in the right position with the other hand, starting on the top, followed by the bottom and finally the opposite side. Make sure the seal fits correctly on to the shield.

**4. Cleaning and maintenance**

The lifetime of the hood and visors is influenced by many factors such as cold, heat, chemicals, sunlight or incorrect use. The hood should be checked on a daily basis on possible damage of its structure on the inside and the outside. Careful use and correct maintenance of the protective hood enhances operating life and improves your safety!

**Checking before use:**

Inspect that every part of the hood is undamaged and installed correctly.

**Cleaning:**

- After each work shift, clean the hood, check individual parts, and replace damaged ones.
- Cleaning must be performed in a room with sufficient ventilation. Avoid inhalation of harmful contaminants settled on individual parts!
- For cleaning of plastic parts use lukewarm water (up to +40 °C) with soap or another non-abrasive detergent, and a soft brush.
- The face seal can be washed in a washing machine or dishwasher at a maximum temperature of 30 °C. The face seal can be dried in a dryer at a speed not exceeding 800 rpm. Wash the face seal separately - it must be removed from the mask before maintenance.
- After cleaning individual parts with a damp cloth, it is necessary to rub them dry or let them dry at room temperature.
- Care for the visors and plastic parts, it is recommended to use the CleanAIR® ®Klar-pilot Fluids.

**Do not use acetone or other cleaning solvents!****5. Materials**

Part	Material
Hood	Polyamide
Faceseal	Neoprene or 3D polyamide knit
Visor	Polycarbonate

**6. Storage conditions**

Store the hood in a dry and clean place at room temperature, avoid direct sunlight (temperature range from -10 °C to +55 °C) with relative humidity between 20 and 95 % Rh).

**7. Warranty**

The warranty ensures that you will receive a replacement if a product has any manufacturing or material defects that appear within 12 months of the date of purchase. The warranty claim must be reported to the sales department/retailer. At the same time, proof of purchase must be submitted (i.e. an invoice or certificate of delivery). The warranty can only be acknowledged if no interventions into the hood have been made.











**Illustrational manual**

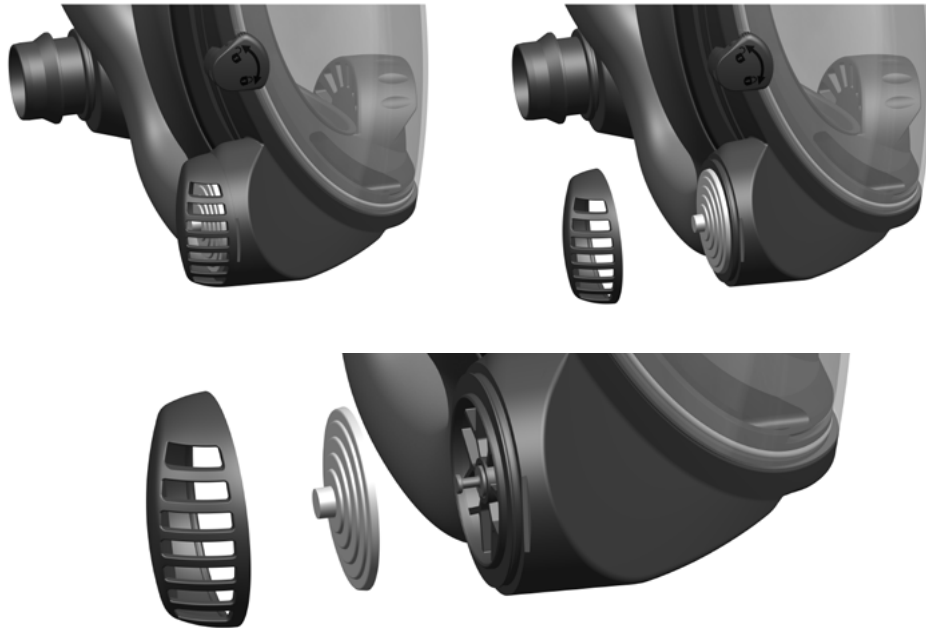
**How to adjust airflow direction**



**How to change the visor**



**Changing exhalation valve membrane**



**Removing the face seal**

\* remove the visor first



How to attach the new face seal





**CleanAIR<sup>®</sup>**



**MALINA - Safety s.r.o.**  
Luční 11,  
466 01 Jablonec n. Nisou  
Czech Republic

Tel. +420 483 356 600  
[export@malina-safety.cz](mailto:export@malina-safety.cz)  
[www.malina-safety.com](http://www.malina-safety.com)